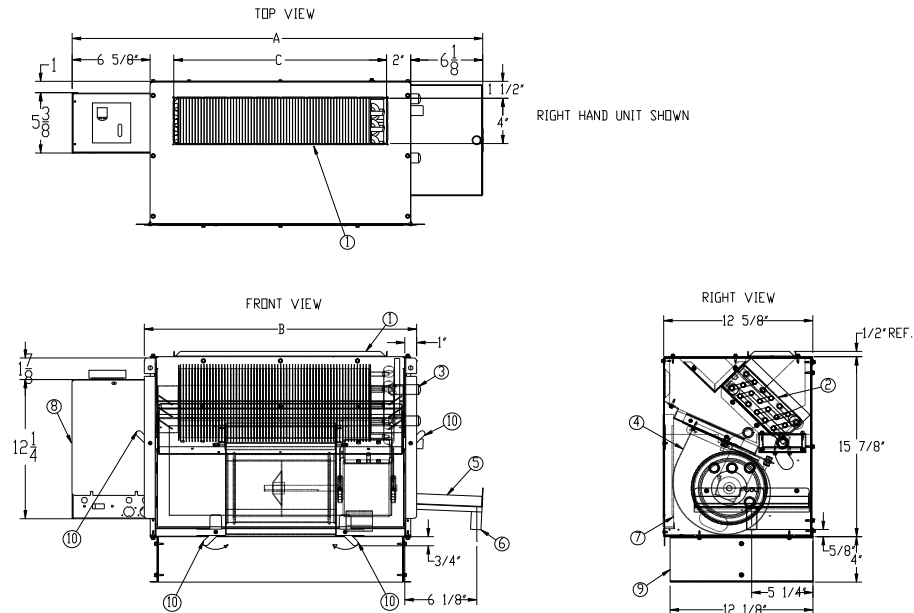


**VBLC**

## Fan Coil Unit

## Vertical Basic Low Profile Concealed Cabinet



	Dimensions				Approx.
Model	(inches)				Weight
	A	B	C	Filter	(lb)
VBLC02	34 <sup>7</sup> / <sub>8</sub>	23 <sup>1</sup> / <sub>8</sub>	18	21x10x1	90
VBLC03	38 <sup>7</sup> / <sub>8</sub>	27 <sup>1</sup> / <sub>8</sub>	22	25x10x1	95
VBLC04	49 <sup>7</sup> / <sub>8</sub>	38 <sup>1</sup> / <sub>8</sub>	33	36x10x1	100
VBLC06	57 <sup>7</sup> / <sub>8</sub>	46 <sup>1</sup> / <sub>8</sub>	41	44x10x1	120

1. Supply air duct collar
2. Coil assembly
3. Water connections (supply and return) O.D. = 5/8"
4. Blower / motor assembly
5. Auxiliary condensate pan
6. Drain connection – 7/8" O.D.
7. Filter
8. Control box
9. Sub-base (optional)
10. Filter Clips

### Accessories (Optional)

Check ☒ if provided.

- ☐ Motor Quick Disconnect
- ☐ Thermostat\_\_\_\_\_
- ☐ Control Transformer & Fan Relays
- ☐ Aquastat Changeover Switch
- ☐ Wall Panel

- ☐ Washable Filter
- ☐ Leveling Legs
- ☐ Unit Disconnect Switch
- ☐ Fuse

## Accessories (Optional)

Coil - 3/8" O.D. Copper Tube; 10 Fins/Inch Aluminum, Sine Wave

### 2-Pipe

☐ 2-Row (STD.) ☐ 3-Row (STD.) ☐ 4-Row

### 4-Pipe (Cooling Rows/Heating Rows)

☐ 2/1-Row ☐ 3/1-Row

☐ Chilled Water Cooling ☐ Hot Water Heating  
☐ Glycol Cooling ☐ Glycol Heating

### Motor(s) - 3 speed PSC

Standard  
115V/60Hz/1ph

Model	HP	Total Amps
VBLC02	1/30	0.5
VBLC03	1/30	0.5
VBLC04	1/20	0.8
VBLC06	1/20	0.8

### Optional:

☐ 208V/60Hz/1ph  
☐ 230V/60Hz/1ph  
☐ 277V/60Hz/1ph.

### Features:

- Automatic Reset
- Thermal Overload Protection System

### Electric Heat (Single Phase)

#### Heater Voltage

☐ 115V  
☐ 208V  
☐ 230V  
☐ 277V

		Electric Heater kW Primary or Supplementary			
		115 Volts	208 Volts	230 Volts	277 Volts
Size	Blowers	Min-Max kW	Min-Max kW	Min-Max kW	Min-Max kW
02	1	1-2 kW	1-2 kW	1-2 kW	1-2 kW
03	1	1-3 kW	1-3 kW	1-3 kW	1-3 kW
04	2	1-4 kW	1-4 kW	1-4 kW	1-4 kW
06	2	1-5 kW	1-6 kW	1-6 kW	1-6 kW

### Condensate Pan

- ☐ Galvanized (STD.)
- ☐ Mastic Coating
- ☐ Stainless Steel Inner Layer

Description: Inner and Outer Layer of 18 gauge Galvanized Sheet Metal with One - Inch Internal Insulation

### Valves and Valve Accessories

- |  |  |
|--|--|
| <input type="checkbox"/> Shut - Off Valve(s)             | <input type="checkbox"/> Strainer(s)                     |
| <input type="checkbox"/> Shut - Off Valve w/ Memory Stop | <input type="checkbox"/> Manual Flow Control Valve(s)    |
| <input type="checkbox"/> 2 - Way Motorized Valve         | <input type="checkbox"/> Automatic Flow Control Valve(s) |
| <input type="checkbox"/> 3 - Way Motorized Valve         | <input type="checkbox"/> Unions                          |
| <input type="checkbox"/> 2 - Way Modulating Valve        | <input type="checkbox"/> Pete's Plug(s)                  |

## General Description

- The low silhouette styling of this cabinet unit makes it ideal for applications in public buildings, schools, hospitals and hotels where the fan coil height is restricted.
- Exterior fabricated of 18 gauge galvanized steel with a ½" matte-faced liner for maximum thermal and acoustical insulation.
- Throwaway filter.
- Manual Air Vent.
- Removable motor/blower assembly.
- System charged with air to insure a leak free arrival at the job site.

This submittal is meant to demonstrate general dimensions of this product. The drawings are not meant to detail every aspect of the product. Drawings are not to scale. Titus reserves the right to make changes without written notice.



605 Shiloh Road • Plano, Texas 75074 • 972-212-4800

All rights reserved. No part of this work may be reproduced or transmitted in any form or by any means, electronic or mechanical, including photocopying and recording, or by any information storage retrieval system without permission in writing from Air Distribution Technologies